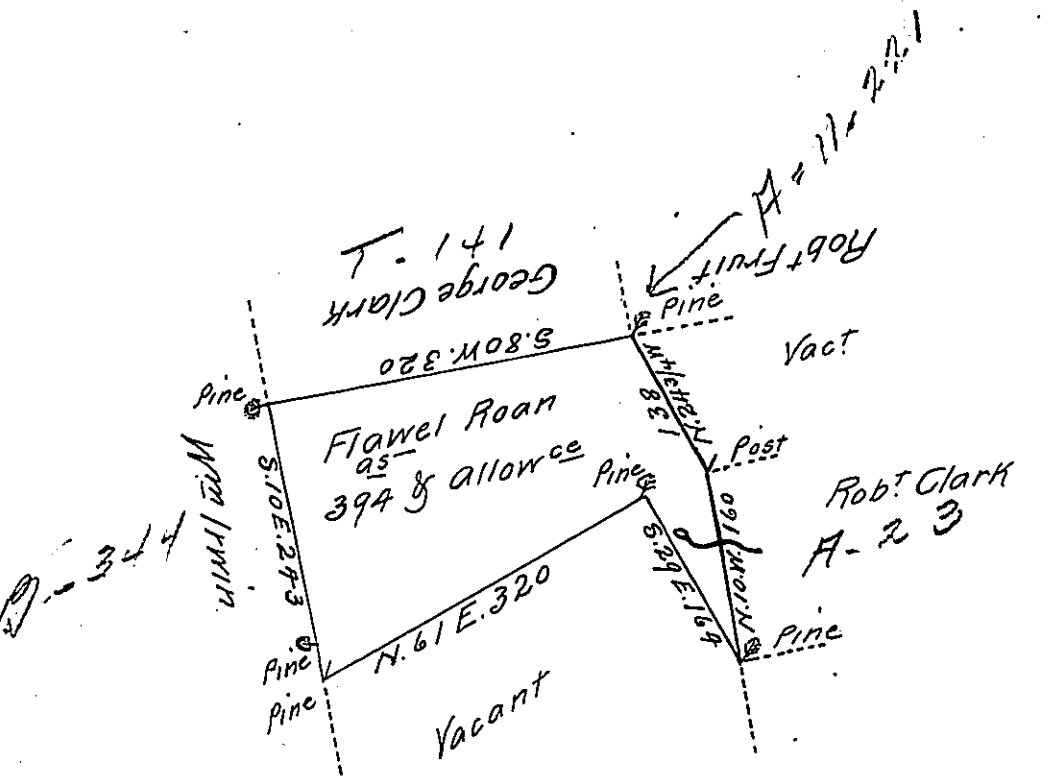


Hazle-
Luzette.



A Draft of a tract of land Called _____ Situate on the Waters of hazel
 Bottom Run in the County of Northum & Containing three Hundred &
 Ninety four acres & allow^e Surveyed for Flavel Roan the 12th day of
 Sep^r 1793 by virtue of a Warrant dated the 13th Day of June 1793
 by W^m Gray D.S.

To Daniel Brodhead Esq^r }
 Surv^r Gen^l }

IN TESTIMONY that the above is a copy of the original remaining on file in
 the Department of Internal Affairs of Pennsylvania, made
 conformably to an Act of Assembly approved the 16th day of
 February, 1833, I have hereunto set my Hand and caused
 the Seal of said Department to be affixed at Harrisburg,
 this Sixth day of October 1910

Henry Horner
 Secretary of Internal Affairs.